

PREPARED BY:
 THE ZENGINEER
 BUCKY SPARKLE, P.E.
 378 MAIN STREET, #2
 EASTHAMPTON, MA 01027
 www.theZengineer.com
 zengineerbucky@gmail.com
 (617) 271-4004

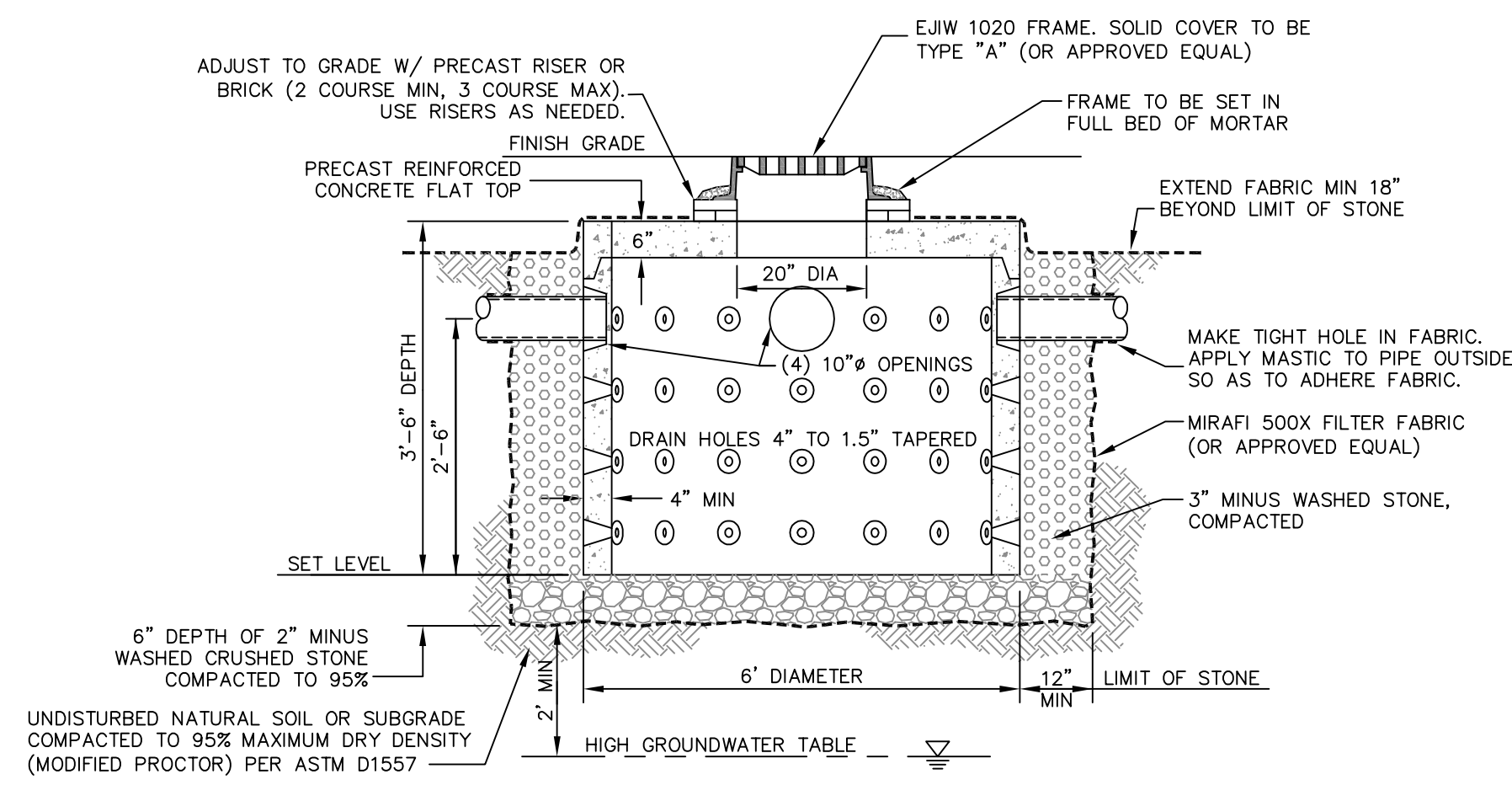
PROJECT:
 INFRASTRUCTURE
 REHABILITATION

PREPARED FOR:
 PRIVATE CONDOMINIUM
 AMHERST, MA

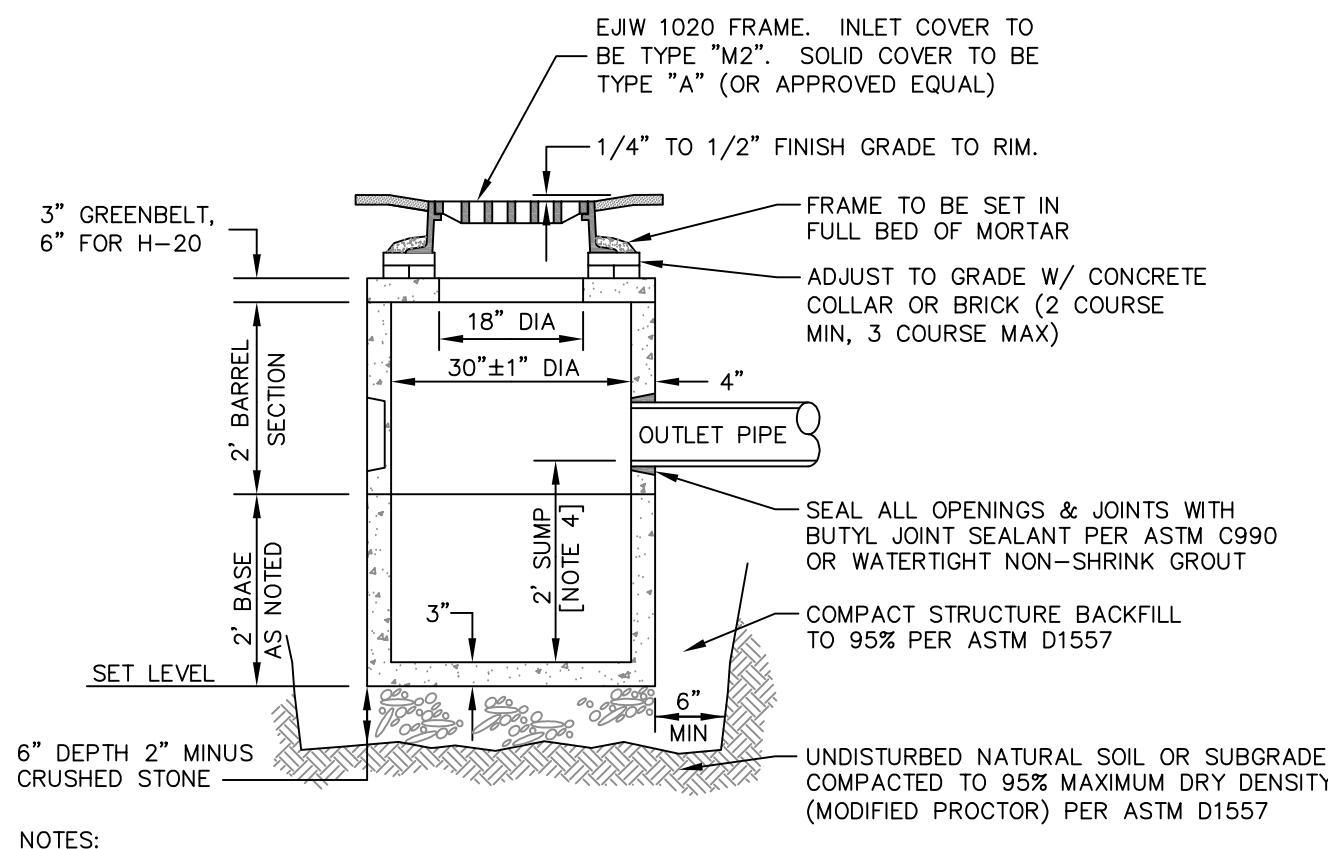
PROJECT No.: **N/A**
 FILE NAME: Chadwick 2014.02.DWG

No.	Revision	Date
1	DEMONSTRATION PLAN	3.14.15

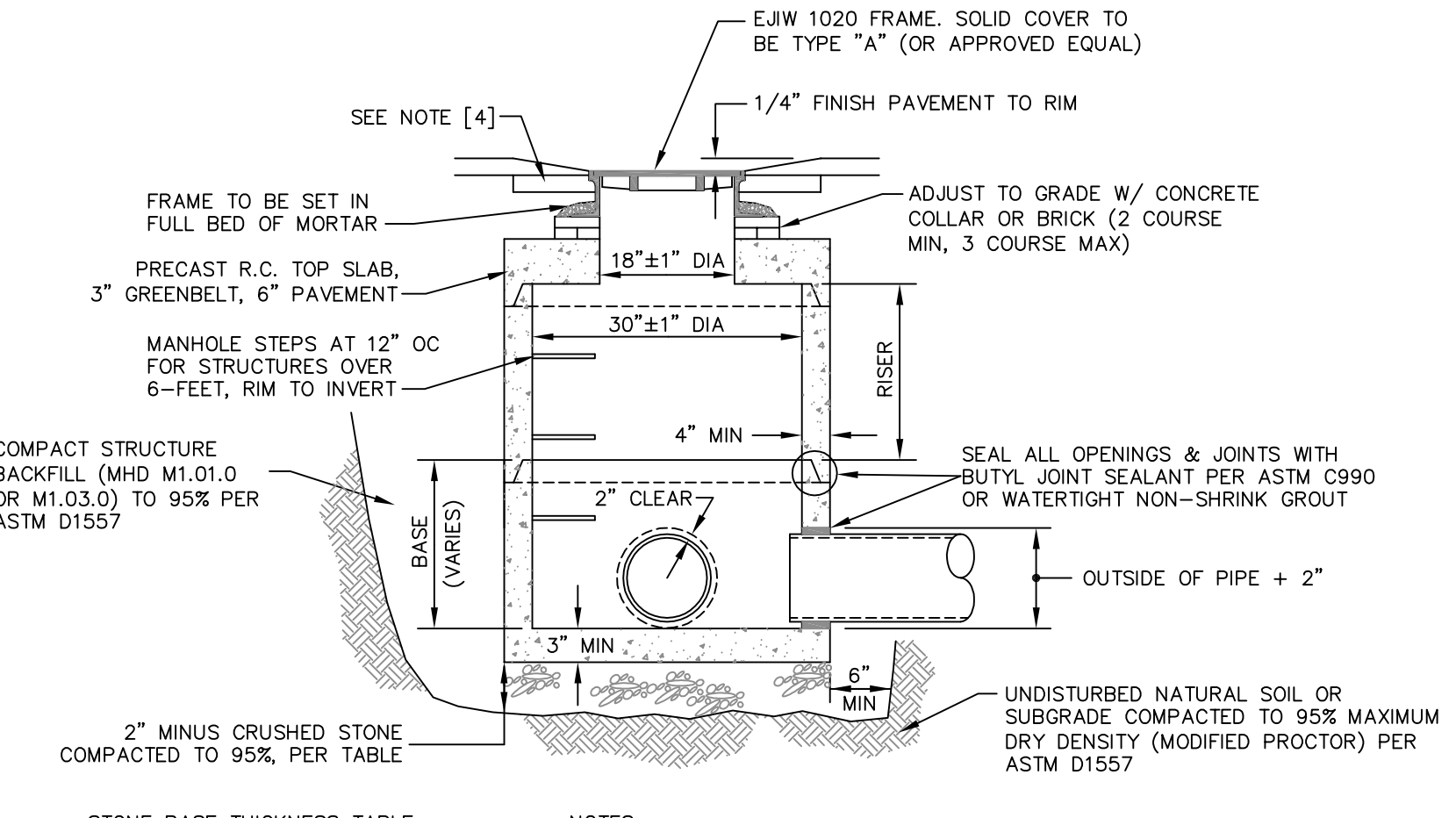
CONSTRUCTION
 DETAILS



- NOTES:**
- [1] 4,000 PSI PRECAST CONCRETE AFTER 28 DAYS CONFORMING WITH LATEST ASTM C478. REINFORCING PER LATEST ASTM A185.
 - [2] PRECAST REINFORCED CONCRETE CYLINDRICAL DRY WELL BY SHEA CONCRETE (OR APPROVED EQUAL).
 - [3] H-20 LOADING WHEN PLACED UNDER TRAFFIC AREA.
 - [4] FILTER FABRIC SHALL BE WRAPPED AROUND ENTIRE DIAMETER OF STONE AND PLACED ALONG TOP OF STRUCTURE AND BOTTOM OF STONE.



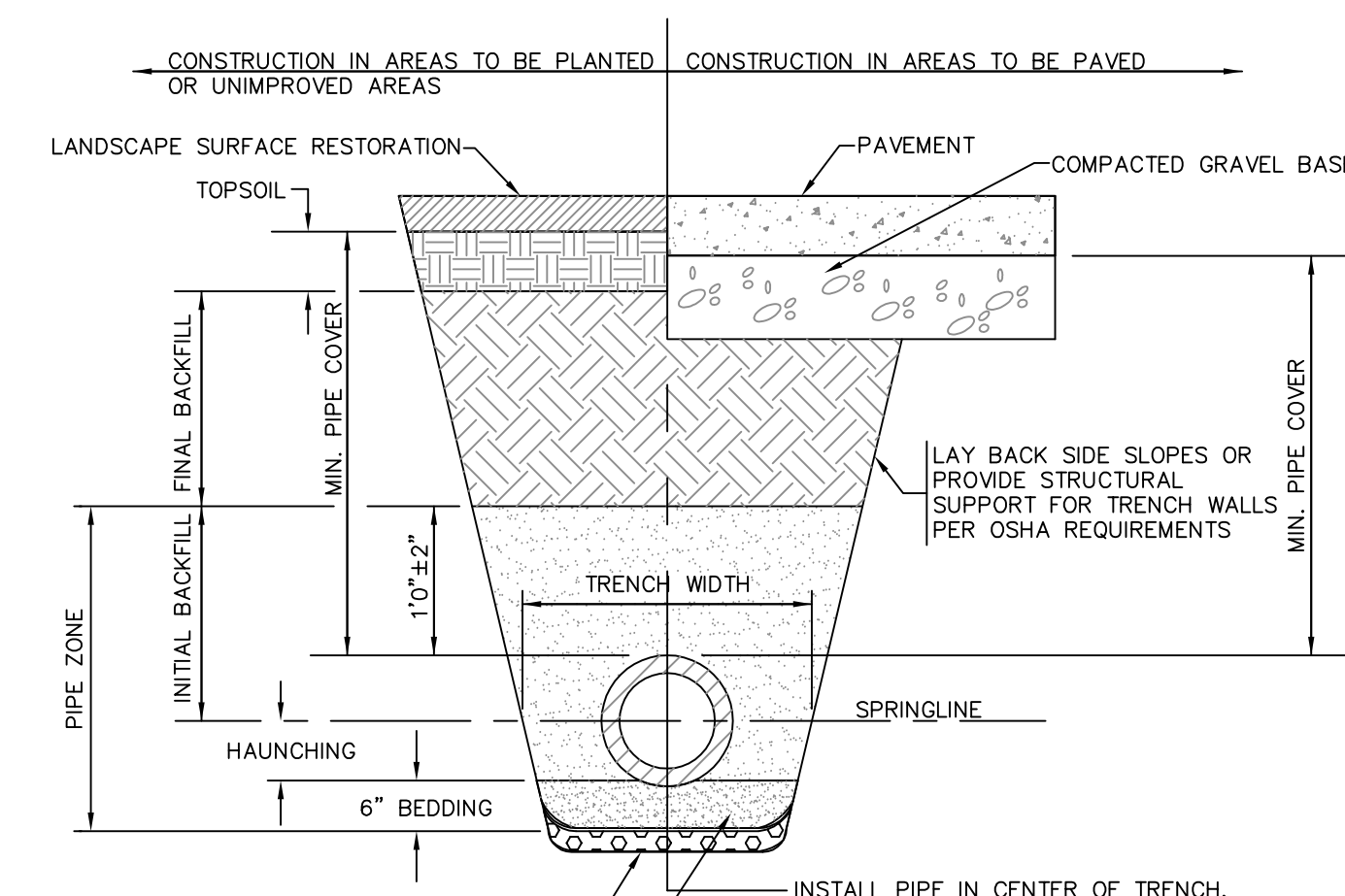
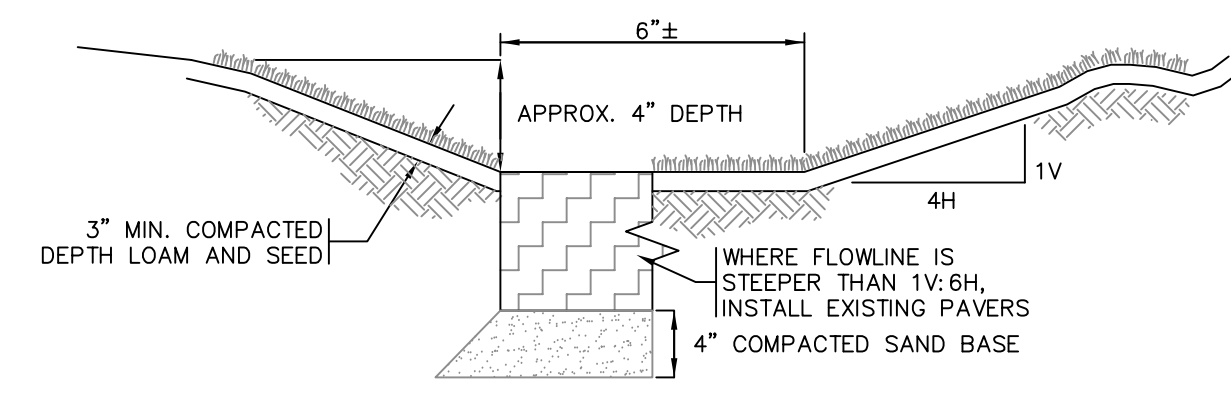
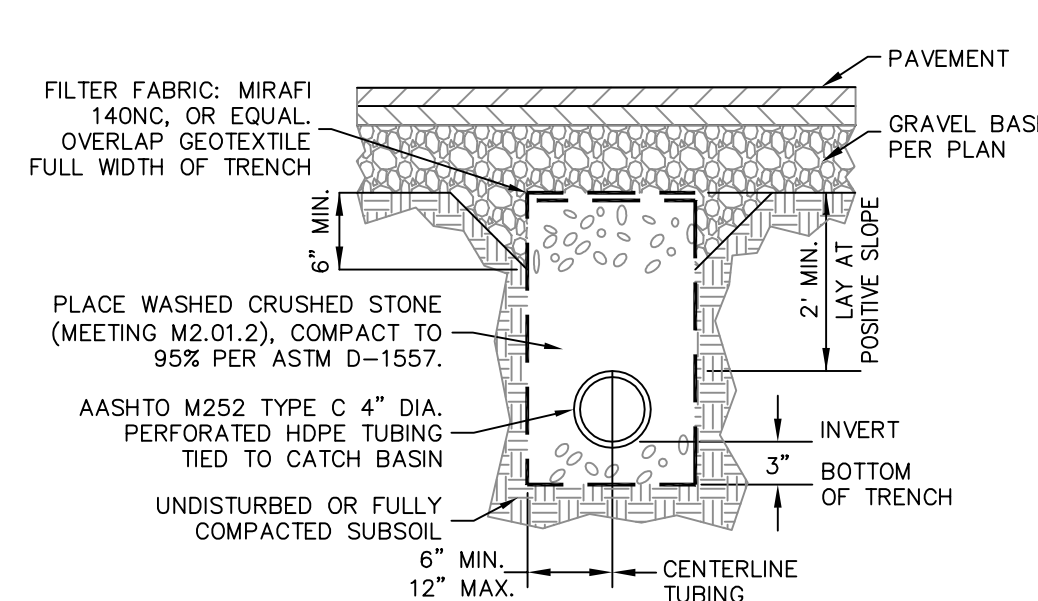
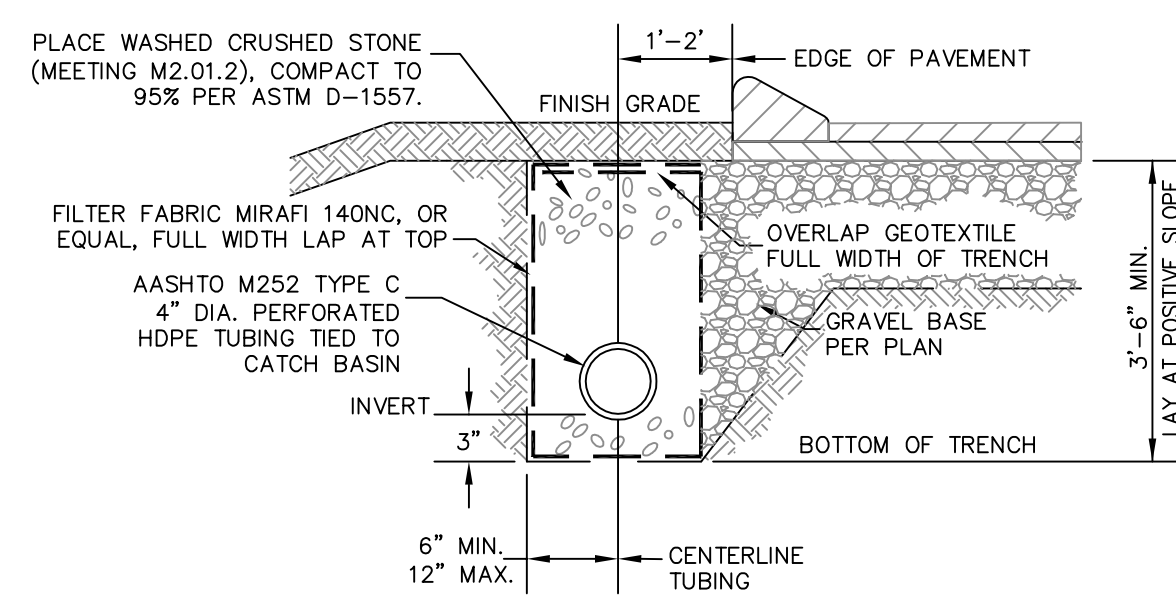
- NOTES:**
- [1] 4,000 PSI PRECAST CONCRETE AFTER 28 DAYS CONFORMING WITH LATEST ASTM C478
 - [2] ALL JOINTS BETWEEN SECTIONS, GRADE RINGS AND CASTINGS SHALL BE SEALED WATERTIGHT.
 - [3] ALL LIFT HOLES SHALL BE GROUTED ON THE INSIDE AND OUTSIDE WITH NON-SHRINK GROUT.
 - [4] NOT ALL CATCH BASINS REQUIRE SUMP. SEE SCHEDULE.



STONE BASE THICKNESS TABLE:

RIM TO INVERT	THICKNESS
<4'	6"
4'-8'	8"
>8'	10"

- NOTES:**
- [1] 4,000 PSI PRECAST CONCRETE CONFORMING WITH LATEST ASTM C478.
 - [2] REINFORCING PER LATEST ASTM A-185.
 - [3] STRUCTURE SHALL BE RATED FOR H-20 LOADING UNLESS IN GREENBELT.
 - [4] COLLAR IN BIT. PAVEMENT: CEMENT CONCRETE PER DETAIL.



FOUNDATION STABILIZATION WHEN REQUIRED BY ENGINEER. OTHERWISE, PLACE BEDDING ON UNDISTURBED NATURAL SOIL

SHAPE BEDDING BY HAND TO FIT BOTTOM OF PIPE. INSTALL PIPE ON STABLE BEDDING WITH UNIFORM BEARING UNDER FULL LENGTH OF PIPE BARREL

TRENCH WIDTH:

[1] MINIMUM WIDTH OF TRENCH MEASURED AT SPRINGLINE OF PIPE, INCLUDING ANY NECESSARY SHEATHING:

PIPE I.D.	WIDTH
LESS THAN 21"	O.D. + 12"
21" TO 42"	O.D. + 24"
GREATER THAN 42"	O.D. + 30"

MINIMUM PIPE COVER:

[1] MINIMUM SOIL COVER OVER TOP OF PIPE.

PIPE MATERIAL	HDPE, PVC	RC, DI
WATER	5' - 0"	5' - 0"
SEWER	4' - 0"	4' - 0"
DRAIN	2' - 0"	1' - 0"

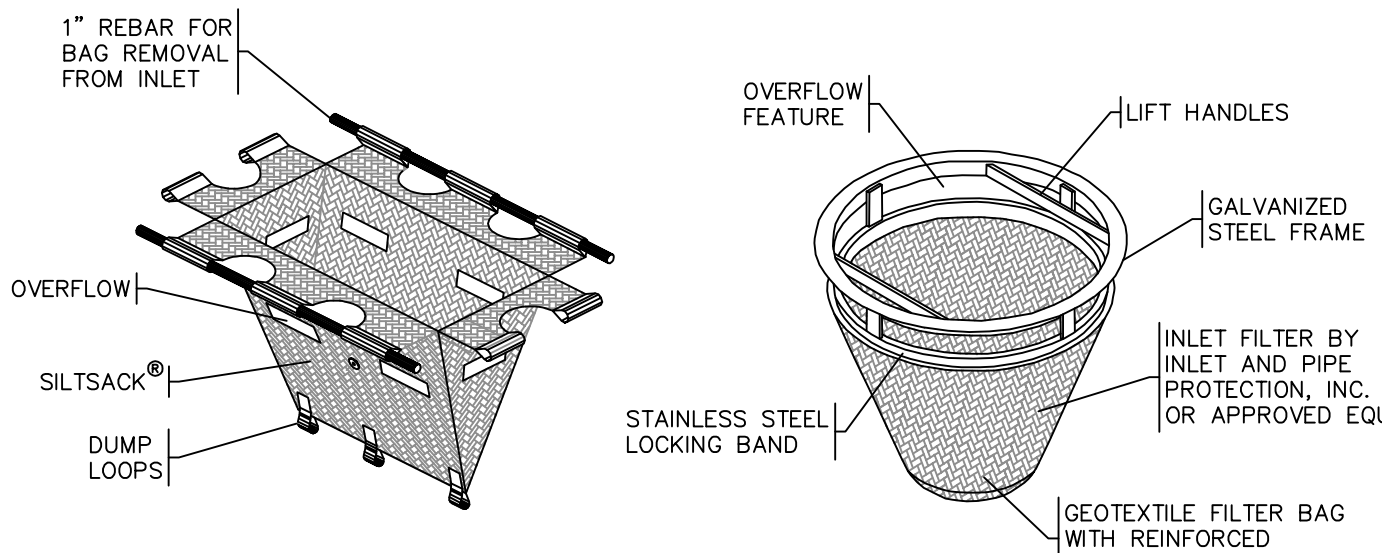
MATERIAL KEY NOTES:

FOUNDATION, BEDDING AND BACKFILL MATERIALS	[NOTE]
FOUNDATION STABILIZATION	[NOTE 1]
BEDDING	[NOTE 2]
HAUNCHING	[NOTE 2]
INITIAL BACKFILL	[NOTE 2]
FINAL BACKFILL	[NOTE 3]

[1] PLACE 2" MINUS CRUSHED STONE.

[2] PLACE 1/2" MINUS SAND BORROW (MHD M1.04.1), AT OPTIMUM MOISTURE IN HORIZONTAL 8" DEEP LOOSE LAYERS, COMPACT TO 95% PER ASTM D-1557 MODIFIED PROCTOR METHOD.

[3] IN PLANTED OR UNIMPROVED AREAS, USE 2-INCH MINUS ON-SITE EXCAVATED MATERIAL. OBTAIN ENGINEER APPROVAL OF 2-INCH MINUS ON-SITE EXCAVATED MATERIALS IN PAVED AREAS. COMPACT TO 95% PER ASTM D-1557.



- NOTES:**
- [1] CLEAN INLET PROTECTION WHEN 30% FULL
 - [2] BURLAP IS NOT AN ACCEPTABLE GEOTEXTILE

